

can-am®



RIDIN' STRONG

ISSUE
N.02

STEVEN RINELLA TAKES
HIS FAMILY OFFLINE

- NO DAYS OFF WITH ALEX TEMPLETON
- LEVEL UP WITH NEW ACCESSORIES
- CHECK OUT UPDATED CAN-AM CLASSICS

TABLE OF CONTENTS

GETTING EYE-TO-EYE WITH NATURE	04
HAPPY TRAILS	08
LAND OF THE FREERIDE	10
OFF THE HOOK	12
WELCOME TO THE FAMILY	14
NO DAYS OFF	16
GETTING YOUR HANDS DIRTY	20
WORK IN PROGRESS	22
THE MISSING LINQ	24
OPEN SEASON	25
COLD COMFORT	26
MAKE WINTER WORK	28
RIDE 365 DAYS A YEAR	30
BEAT THE COLD	32
BRAVE THE ELEMENTS	35
WHISTLE WHILE YOU WORK	36
GEAR ON THE GO	37
MEET THE LINEUP	38



GETTING EYE-TO-EYE WITH NATURE

By Steven Rinella

Steven Rinella is a father, outdoorsman, wild foods enthusiast and Can-Am ambassador who lives in Montana with his wife and three kids. He's the creator and host of the MeatEater show and podcast and a New York Times bestselling author who shared the following adapted excerpt from his latest book, *Outdoor Kids in an Inside World: Getting Your Family Out of the House and Radically Engaged with Nature* (Random House, May 3, 2022).

Reprinted with permission from Penguin Random House.





Steven Rinella is a father, outdoorsman, wild foods enthusiast and Can-Am ambassador who lives in Montana with his wife and three kids.

I grew up running wild in the woods and lakes of rural Michigan. When I became a father, it was while living in Brooklyn, New York, and I was stressed out about how to create for my own children the kind of hands-on relationship with the outdoor world that I had as a kid. I knew it wasn't going to be as easy as opening our back door and letting them roam around outside until dinner; it would take deliberate effort to build upon their innate "biophilia," a term popularized by the American biologist E.O. Wilson that describes our natural tendency as humans to seek connections with nature and other life forms. In my experience, a critical part of having a hands-on relationship with the natural world is one's ability to see themselves as a part of it, rather than outside of it looking up or down at it. In other words, I had to create in my kids the ability to see nature on an eye-to-eye level.

To look down at nature is to regard it as lowly, dirty, savage, or uncouth. It's the mindset that



"If we want our kids to feel a true and pragmatic sense of stewardship for the environment, we need to let them relate to it as a peer, as something that they're entwined with through symbiotic connections".

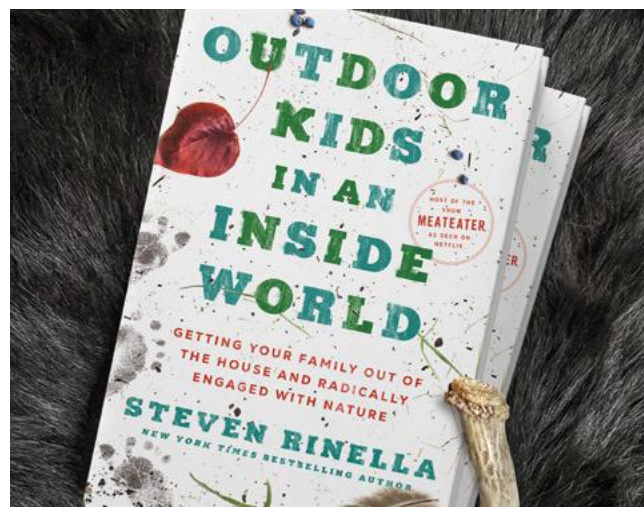


regards worms as gross, dirt as filthy, and wild animals as flea-bitten and dangerous. This view of nature leads inevitably to desecration.

It creates room, morally and spiritually, to disregard nature or permanently destroy it in the name of progress or civilization.

When I say looking up at nature, I'm referring to a more contemporary perspective that regards nature as being more pure or beautiful than ourselves. This perspective holds that nature is somehow diminished through human involvement, even when that involvement is responsible and well-meaning. In environmental circles, this perspective is often described as preservationism. It's easily understandable if you consider the juxtaposition between a preservationist and a conservationist. A conservationist seeks to answer the question 'How can we use nature responsibly and sustainably?' A preservationist asks, 'How can we protect nature from any use at all?'

While preservationism makes sense from a purely environmental standpoint, I do believe that looking up at nature comes with its own human risks—especially for kids. Think of those millions of tourists who visit Yellowstone National Park every year, just a ninety-minute drive from my house. Many of them never even leave their cars or the parking lots. There they are, visiting some of the most stunning displays of the natural world on earth, and they do so only by looking through the glass of a windshield or standing behind some sign that warns of the dangers posed by wildlife or bubbling geysers. Sure, grown-ups can easily understand the logic behind enforcing passive observation of these natural wonders. If hordes of people were allowed



to trample everything in Yellowstone, the magic of the place would be diminished.

But kids don't necessarily enjoy that level of insight, and I can't help but wonder about the sense of displacement and alienation that we create in our children by cordoning them off from nature. Imagine for a moment if Disneyland took the same approach. Imagine that the rides are there only to be looked at and never ridden. Imagine if we explained that Mickey and Minnie, or Elsa and Anna, are too pure to be touched by the marauding, corrupting hands of our children. Would Disneyland still enjoy the position that it holds in our children's hearts? Or would they quickly lose interest and move on to other things? If such visits are balanced by journeys to places where our kids are welcome to get muddy and bloody by mixing it up with nature, that's great. But if their only exposure to nature is in places where protective barriers are necessary, how can we expect our kids to feel connected to the natural world? If we want our kids to feel a true and pragmatic sense of stewardship for the environment, we need to let them relate to it as a peer, as something that they're entwined with through symbiotic connections.

① Rear Adventure Rack

A heavy-duty steel rack that increases the cargo versatility of the vehicle. 715006809

② Adventure Rack Enclosure

Covers all accessories mounted inside of the Rear Adventure Rack. Rear panel zip-type window with roll-down feature. 715006818

③ LinQ Urban Bag

This water-resistant bag can be used as cargo when you ride and a backpack when heading off for a hike. 219401026

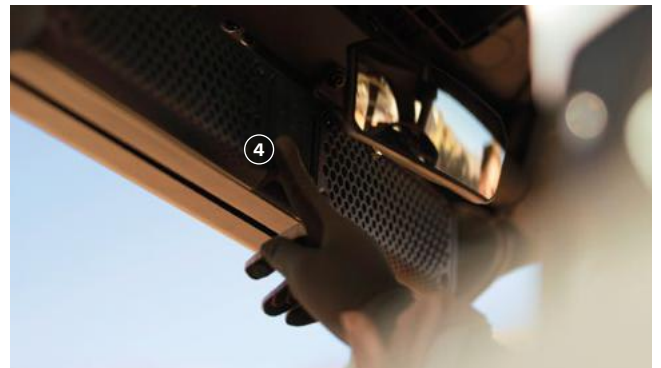


Shop Can-Am Commander Adventure accessories

HAPPY TRAILS

The adventure begins when you start up your Can-Am Commander, which delivers all-terrain performance and gets you away from it all in style.

From your bike to your gear, pack everything you need in your Can-Am Commander. Tackle climbs, shred the descents and set your sights on taking on the wilderness with the help of the machine engineered to make that happen



4 **NEW** Wetsound Stealth XT 6 Can-Am Edition Sound Bar

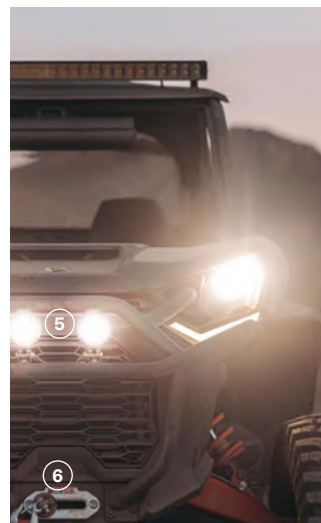
A Bluetooth-enabled sound bar with integrated cabin lights and a wireless remote control. 715008282

5 3.5" (9 Cm) LED Driving Lights (2 X 14 W)

A pair of LED lights with a narrow and long light beam—perfect when driving at higher speeds. 715003666

6 Can-Am HD 4500-S Winch

A rugged all-weather winch with a pulling strength capability of 4,500 lb. 715006417



LAND OF THE FREERIDE

Professional freerider
Samantha Soriano finds
new ways to express
herself on two wheels.



Like it was for many, 2020 was a year of change for Samantha Soriano. A professional World Cup racer, she'd recently crashed and was at her home in Colorado recovering from surgery and preparing for the upcoming season.

"COVID rolled around and I was stuck at home but lucky enough to live right beside Trestle Bike Park, which is one of the best bike parks in the country," says Soriano. "DJ Brandt is a good friend of mine who rides there and he was the one who suggested I try freeriding."

Freeriding—the type of mountain biking that Samantha threw herself into—is a discipline that's defined by being creative and pushing your limits.

"In freeriding, the whole world is your playground. There's all sorts of different elements in it, but really it's about riding without boundaries," explains Soriano.

"Because it's not about races and results in the same way—the most creative and unique part of it revolves around creating videos and photo content."

Perhaps nothing explains the difference between freeriding and other biking better than its biggest events, Red Bull Rampage and the recently-established version for women known as Formation.

"Formation is not a competition so much as a content event. But it's so special because it focuses on women supporting each other, building this sport together. It's really empowering that we have this chance to shape it into what we want."

For Soriano, Formation and Rampage have the added advantage of being located in



Utah, where she recently relocated. The state is renowned around the world as a mecca for mountain biking, a result of its varied terrain and warm weather. This made it the perfect location for the recent shoot she did with Can-Am.

"Honestly, it was maybe the most fun shoot I've done in my life," says Soriano, a Can-Am SSV owner. "Getting to do it with Tyler McCaul, who I've known forever, made it fun. But to be able to have this vehicle to make it more obvious that can get us to these incredible places and that lets me skip some of the pedaling (laughs) and retain my energy for the important parts, it just elevates everything."

OFF-ROAD PLAYLIST



Samantha Soriano

Front and Rear Hitch Drawbar (not shown)

A forged steel drawbar offering 1,650 lb of towing capacity. 715008350

1 NEW Front Deluxe Half Doors

Color-matching doors with a premium fit and finish and interior pockets. 715007201

2 PowerFlip Windshield

Equipped with electric cylinders that allow the rider to adjust the windshield opening at the touch of a button. 715003885



DEFENDER PRO XT HD10

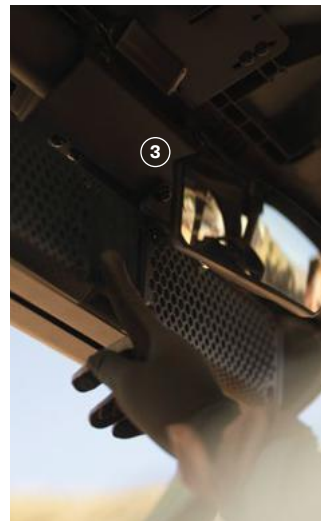


Check out our Can-Am Defender Adventure accessories

OFF THE HOOK

Keep it reel in this angler-themed Can-Am Defender that boasts a premium sound system and a cooler that's perfect for storing your lunch while you keep casting for adventure.

For legendary days out on the water with family and friends, hitch an Alumacraft 2022 Classic 165 Sport to your Can-Am Defender and pull in a year's worth of great memories.



- 3** **NEW** Wetsound Stealth XT 6 Can-Am Edition Sound Bar

A Bluetooth-enabled sound bar with integrated cabin lights and a wireless remote control. 715008282
- 4** LinQ Modular Box (10L)

A stackable box with a weather-resistant sealed lid. 715005494
- 5** 10" (25 cm) Double Stacked LED Light Bar (60 W)

Light up the lake with this light bar that packs a big punch for its size. 715002933

A photograph of a Can-Am Outlander utility vehicle parked in a forest. Two people wearing helmets and jackets are sitting on the vehicle. The vehicle is dark grey with 'OUTLANDER' and 'can-am' branding. A red horizontal line is positioned above the text, and a yellow horizontal line is positioned below it.

WELCOME TO THE FAMILY

These updated rides are new to the Can-Am family.



Can-Am Outlander MAX XT

Put together your two-person dream team and hit the trail for riding, hunting or fishing. The Outlander MAX XT features a bold, modern look (and a fresh fascia) with new features: intelligent engine braking and LED integration. It's factory-fit for your next adventure.



Can-Am Youth Line-up

Even the smallest member of your crew can keep up on these mini versions of the full-sized Can-Am Renegade. Smaller handlebars and a throttle limiter are just some of the design features that are specially made for kids' comfort and safety. Electronic fuel injection (EFI) makes sure they're easy to start up every time—for everyone.



[Check out the vehicles](#)

A woman with long blonde hair, wearing a tan cowboy hat and a tan jacket, is shown in profile, looking out over a field. She is standing behind a metal railing. The background is a blurred landscape with trees and a building under a bright sky.

NO DAYS OFF

In Alex Templeton's world, waiting for the right conditions takes a back seat to getting the job done.

“There has not been one time that our Can-Am hasn’t fired right up. This is what makes the difference between life and death for some of these animals, and for us who are making a living.”

—Alex Templeton

There’s one day every spring when Alex Templeton can sit back and know that all her hard work is truly worth it. It’s the first day she gets to let the calves graze in the open field of her cattle ranching operation in Polo, Missouri.

In Polo, winters are as tough as the calves themselves. Having just battled the elements herself, Templeton knows better than anyone how much the calves deserve the freshly grown grass. It’s hard to believe that just a few months ago, she was bringing the calves into her house to help fight the freezing temperatures of the Missouri winter—and that if she fast-forwarded three months ahead, she’d be dealing with everything from torrential rain to extreme heat. This, in a nutshell, is the life of a second-generation cattle farmer—it isn’t easy, but it’s the only way Templeton knows.

At 29 years old, she’s still young by cattle farming standards and an outlier in this traditionally male-dominated world. But after graduating from the University of Missouri, it was the only option she could see.

“I knew I wanted to come back to work on our farming and ranching operation. I thought, ‘No better time to try than right now,’” Templeton said.

"We have the coldest of the cold to the hottest of the hot. Mother Nature can be very unforgiving to us."

- Alex Templeton



Although it's been less than a decade, there's something about the nature of farming and ranching that makes you grow up real quick—one of those being the unrelenting challenges that the weather has thrown at Templeton. That means there's no such thing as a daily routine.

"A lot of our ground isn't connected. For example, we might have an 80-acre farm in one part of the county, and then a 300-acre farm in another part of the county. So we need to be able to get to and from the farms efficiently."

One of the biggest problems that Templeton faces on the farm is heavy rain, making the dirt roads and crop fields treacherous. In the farming world, especially when cash is on the line, sitting around and waiting isn't an option.

"The absolute worst combination for calving is when it's cold and muddy and wet, but we still have to be able to get in and out to check on them," Templeton said. "It can save their lives."

While Templeton knows her farm is a way for her to make a living, her connection to the land and her animals is much deeper than that.

"We don't just look at it from just the losing dollars standpoint. We take it incredibly personally. We dedicate our lives to our livestock and provide them with adequate care to the absolute best of our abilities."

On top of her work as a cattle farmer, Templeton also helps manage plenty of soy and wheat fields—a task that requires even more mobility, particularly in the summer months, which can be even more grueling than the winter with its freezing temperatures.

"We have a definite four seasons here—we might get down to minus with 30 wind chill in

the wintertime and 110 degrees with 100% humidity a couple months later. We have the coldest of the cold to the hottest of the hot. Mother Nature can be very unforgiving to us," Templeton said.

While nature runs the show on the farm, anyone who's been working the land as long as Templeton knows there are no days off—no matter the weather.

"If the conditions are right, you need to be in a tractor planting or you need to be in a combine harvesting, because tomorrow the weather might not be right. Everything revolves around the weather, and sometimes that's incredibly frustrating because it's out of our control."

However, there is one thing that's in her control—her Can-Am.

"There has not been one time that our Can-Am hasn't fired right up—these machines hold up so much better than any other brand we've ever used. This is what makes the difference between life and death for some of these animals, and for us who are making a living."



① LinQ 12 Gal (45L)
Cargo Box

Holds cargo safely and
securely while riding.
715003879

② LinQ Tool Holder

A safe and convenient
way to carry tools that
don't fit into a box or bag.
715007358

③ Front Deluxe Full Doors
(Stock on this vehicle)

Heavy-duty doors give
the best protection
against the elements.
715005214



DEFENDER MAX LIMITED HD10

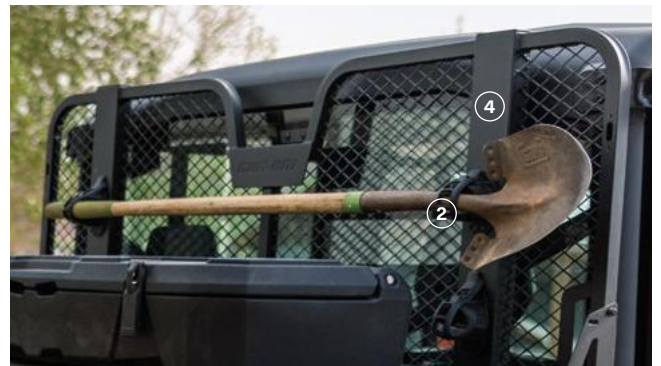


Check out our Can-Am
Defender Work accessories

GETTING YOUR HANDS DIRTY

This down-to-earth Can-Am Defender is the perfect helping hand for those rough and tumble days working your land of plenty.

The Defender is Can-Am's most capable side-by-side ever, perfect for those long days out on the land when you need to get the job done right. Find comfort for the whole crew, no matter the elements, with its Heating, Venting and Air Conditioning (HVAC) system and no obstacle too big with the new 65" Defender HD7 Forward A-Arms combined with 30" XPS tires.



4 Deluxe Headache Rack
Protects cab components from cargo load. 715002423

5 Flip Glass Windshield (Stock on this vehicle)
3-position flip can be set at fully closed, ¼ open, or fully open. 715002942

6 Windshield Wiper and Washer Kit (Stock on this vehicle)
An ideal way to keep your windshield clear in rain, or while riding through mud and water. 715001638

① LinQ Low Profile Basket

A low-profile open basket that's perfect for easy access to tools, rope, winch and plow accessories.
715004282


Expedition Bumpers (not shown)

Profiled steel tubes that protect your vehicle.
Front: 715007233
Rear: 715007234



OUTLANDER MAX XT 570

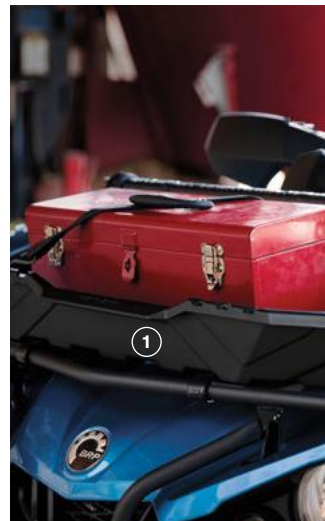


 [Shop Can-Am Outlander work accessories](#)

WORK IN PROGRESS

No matter the job, go the extra mile with your Can-Am Outlander thanks to the versatile LinQ system and a booming sound system.

Farming is serious business and requires dependable tools. When you hitch yourself to a Can-Am Outlander, you're getting confident handling, plus the most horsepower and best hauling in its category.



② LinQ Tool Holder

This convenient swivel latch helps store tools easily. 715007358

③ LinQ Large Cargo Box

A large removable rear bed for bulky items. 715007001

④ LinQ 11.5 Gal Audio Cargo Box

Make the workday sound sweeter with its built-in high-performance amplifier. 715003018

THE MISSING LINQ

The LinQ storage system is an easy way to expand your cargo capabilities. All it takes is a quarter turn to remove and install each component.



Explore more LinQ accessories

MOUNTING LOCATION

Deluxe Headache Rack
D 715002423



LinQ Cargo Rack
D 715006140



16" BASE

LinQ 8 Gal (30 L) Cooler Box
715004778



LinQ Tool Box
715008111



36" BASE

LinQ Gun Case
C 715004968



LinQ 12 Gal (45 L) Cargo Box
C 715003879



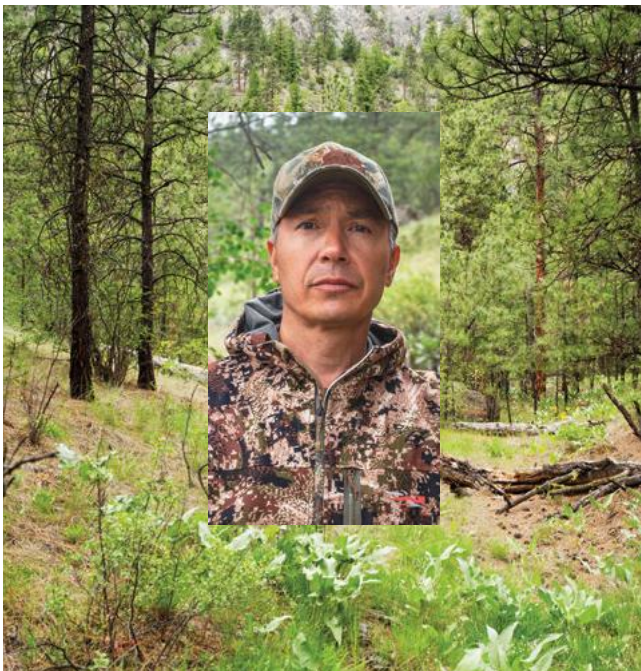
LinQ Premium Storage Bag by Ogio
C 715002923



OPEN SEASON

Go anywhere in the backcountry with this hunt-ready Can-Am Outlander and bag a big one with the help of these premium accessories.

Store your hunting essentials in this storage bag and basket, secure your gun with this Gun Boot and Rack, and protect the ride with our extreme bumper. Take this Outlander scouting with you for a trophy season to remember.



1 LinQ Premium Storage Bag By Ogio

A semi-rigid cargo bag with a 17.2 gallon capacity. 715003248

2 Gun Boot 6.0 Impact[†] by Kolpin[†]

A gun boot with extra room for pistol-grip-type weapons and small bipods. 715001419

Gun Boot Rack (not shown)

An all-steel rack for the Gun Boot 6.0 Impact. 715001918

3 Extreme Front Bumper

Protect your ride with this ultra-sturdy bumper. 715004279

4 Can-Am HD 3500 Winch

A four-way roller fairlead with rugged all-steel gears and bushings. 715006415

5 LinQ Low Profile Basket

A low profile open basket perfect for easy access to items. 715004282



Explore Outlander hunting accessories



COLD COMFORT

Alumacraft ambassador and world-class angler Jay Siemens finds solace out on the ice.

Jay Siemens doesn't remember his first fish, but he certainly remembers the fish that got him hooked: a 47-inch pike pulled from the Red River, just a few miles east of his childhood home in Manitoba.

"When I caught that fish, I was vibrating for weeks afterwards. My parents thought it was a fad that was going to last a couple months, but it stuck. I just kept going deeper and deeper into the sport," Siemens explained.

How deep, exactly? Well, he has over 100,000 followers on YouTube and has done a lifetime of world-class fishing before even turning 30. Siemens is famous for his ability to make the most of every day out on the water, most notably when spending dozens of days on the ice in his new home in Northwestern Ontario during notoriously harsh winters.

While some might see him as tough for logging those long days out on the ice, Siemens sees it simply as a passion that's born from one goal: fish more, catch more.

"If you don't ice fish, then you're missing out on half a year of fishing. Right?" Siemens said. "I'm definitely in the boat all summer. But when winter comes, I'm ice fishing just as much."

That do-it-all attitude has led to some unique opportunities—like getting to guide the world-famous MeatEater crew for an episode of fishing out on Devil's Lake in North Dakota, a mecca for ice fishing enthusiasts.

"I've been a fan of theirs for years, so that was a pretty cool moment. For them to notice me was very humbling," Siemens said.



The crew spent many days on the lake, including some of the coldest in Siemens's memory, accessing deep holes on their Can-Am Defenders. The team ended up reeling in pike, white bass, walleye and more, thanks to Siemens' expertise.

Like the MeatEater crew, Siemens has built a career off of documenting his adventures, with an eye for photography that has evolved alongside his love of fishing and the outdoors.

"I always want to teach and entertain people through the videos. My grandpa is really into fishing and he's a big part of why I'm into fishing—and I know that for a lot of people, getting into sports like ice fishing can be intimidating," said Siemens.

While the first steps might be tricky, there's nothing like the healing power of a day out on the ice—when you can immerse yourself in the perfect silence of winter, there's nothing else like it.

① Full Doors with Power Windows

Lockable doors that protect you from the winter elements but are easy to remove on summer days. 715006331

② Full Windshield - Hardcoated

High-impact-resistant windshield provides excellent optical clarity and better abrasion resistance. 715002432

③ LinQ Tool & Gun Holder

Includes 5 anchor points to securely hold tools and guns. 715005466



DEFENDER XT HD10



Shop Can-Am Defender Winter Accessories

MAKE WINTER WORK

Get out from under the weather this winter, with these Can-Am Defender accessories designed to clear the way and keep things cozy and secure.

Show Old Man Winter who's boss with the frost-friendly machine that offers rugged protection from the elements. Batten down the hatches, your all-weather workhorse has arrived.



4 Can-Am ProMount Flex2 Plow Kit 72" (183 cm)

An easy-to-install mounting solution that's designed for efficient plowing. 715008170

5 LinQ Tool Holder

This convenient swivel-latch helps store tools simply. 715007358

6 Hanging Storage Box Kit

Versatile rack and box that can be installed in 3 different positions. 715005449

① Glass Windshield with Wiper

Curved and laminated glass windshield protects from the elements. Comes with a single-speed wiper with washer fluid dispenser. 715003652

② 3.5" (9 cm) LED Driving Lights (2 x 14 W)

Pair of LED lights with narrow and long light beam perfect for driving at higher speeds. 715003666

③ Upper Soft Door Panels

Converts half-door into door. 715004718



COMMANDER XT 1000R



RIDE 365 DAYS A YEAR

Transform your Can-Am Commander into a winter warrior capable of taking whatever a colder climate throws your way, thanks to tracks, plows and more.

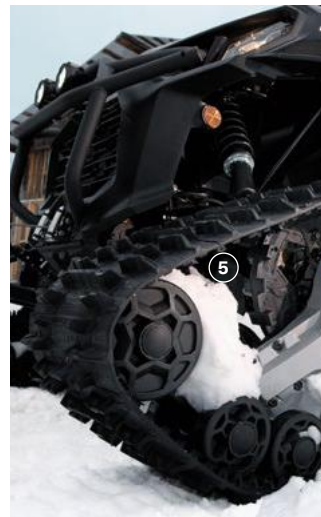
Find all the power and features needed for all-season performance in your new Commander. Whether work or play, this is a ride that refuses to take time off to hibernate in the garage.



4 Can-Am ProMount 66" (168 cm) Steel Plow Kit

An easy-to-install mounting solution that's designed for efficient plowing. 715007775

Defrost, Heat & Ventilation System (Not Shown)



5 Apache 360 LT Track System

Multifunctional tracks designed to support heavy loads on rough terrain. 715005103

① LinQ Low Profile Basket

Perfect for easy access to tools, rope, winch and plow accessories. 715004282

② Apache 360 LT Track System

Multifunctional tracks designed to support heavy loads on rough terrain. 715005103

③ LinQ 23 Gal (86L) Trunk Box

Holds cargo safely and securely while riding. 715004923



OUTLANDER MAX DPS 570



Check out our Can-Am Outlander Winter Accessories

BEAT THE COLD

A winter wonderland still takes work. Push, pull and protect your Can-Am Outlander with the help of these premium accessories.

Built for all types of terrain and weather, your Outlander is the ultimate snow warrior. No matter the month, the forecast always calls for performance, comfort and handling when you've got one of these in the arsenal.



4 Can-Am ProMount 66" Steel Oneway State Blade

Make the job easier with this one-way "winged" state plow designed to throw snow higher and further. 715007263



5 Integrated Heated Grips & Thumb Throttle Combo

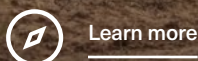
Keep your hands feeling just right thanks to the five heat settings and individual controls for thumb and grips. 715005072

Seat Heater (Not shown)

Keep your buns toasty with this 25 W seat heater. 715007211

RESPONSIBLE RIDER

The Responsible Rider program is about being aware when you ride and always considering safety, etiquette and the environment, whether you're on the trails, in the mountains or on the dunes.



BRAVE THE ELEMENTS

Bring on the dirt, mud, rain and sun. These accessories offer more comfort and protection from whatever the weather throws at you.



[Explore more Cabin options](#)

WINDSHIELDS

PowerFlip Windshield
 D 715003885
 C 715003658



ProVent Windshield
 D 715005276
 C 715005210



ROOFS

Sport Roof
 D 715002430 / (MAX) 715003038
 C 715006218 / (MAX) 715004704



Can-Am Audio Roof
 D 715005206
 (MAX) 715006879



DOORS

Deluxe Full Doors
 D Front: 715005214
 D Rear: 715005215



Clear Rigid Doors
 D Front: 715006261
 D Rear: 715006262



WHISTLE WHILE YOU WORK

A hard day's work goes smoother when you've got a great soundtrack. These premium audio accessories allow you to groove to your playlist on the job.



Shop Audio Accessories

Complete Overhead Audio System

A rugged, waterproof Jensen† audio system designed to keep you entertained while you get through your to-do list.
D 715002019



Complete Wet Sounds Audio System

This premium sound system is built for outstanding sound quality worthy of the playlists of champions.
C 715003672



Bluetooth Handlebar Soundbar by MTX

Bluetooth speaker with fingertip control.
A 219400840



Can-Am Audio Roof

Get the day off to a good start with this built-in audio roof.

D 715005206
MAX: 715006879



Can-Am Subwoofer

Powerful underseat subwoofer speaker box.
C 715006359





Can-Am Pyra Helmet 929038



Utility Overshirt 454552



Ladies' Signature Crewneck Sweatshirt 454542



Vision Flat Cap 454526



Can-Am Steer Gloves 446329

GEAR ON THE GO

Our latest apparel lineup and protective gear not only perform to the highest standard, our designs encourage you to make a statement on who you are as a rider. It's time to suit up for Off-Road Livin'.



[Shop Apparel Men](#)



[Shop Apparel Women](#)



MEET THE LINEUP

Our lineup covers every reason to ride, from cruising around to getting serious work done. What you see here is just a small taste of our selection.

DEFENDER



Limited



X mr with half doors



XT

COMMANDER



DPS



XT-P





YOUTH



DS



RENEGADE



RENEGADE
X xc

OUTLANDER



DPS 850



XT-P 1000R



X xc 1000R



Customize your ride so it's exactly the way you like it. Pick each individual accessory and it'll all be there, right from the beginning. In some cases, you can even pick the color and engine that fits your riding style.



Customize your ride